

July  
2024

# THE FSC FLYER

Family Support Center Prince George's  
*(formerly Adelphi/Langley Park Family Support Center)*



## WHAT'S INSIDE:

- A Message From Mariela Hakans, Director of Family Support
- FSCPG Updates
- Nurturing Parenting Program Highlight
- Helpful Resources
- Summer Outdoor Activities
- Calendar of Events

### A MESSAGE FROM MARIELA

**Welcome Summer!**

**We are also welcoming our participants back to the center for the summer session of ESL/Adult Basic Education.**

**This month we have a field trip to Wolf Trap Children's Theatre in the Woods for our participating families. Remember to sign up to attend this and any upcoming field trips.**

*Mariela*



**MARIELA HAKANS, DIRECTOR**



DESSALINA ROBERTS



BIENVENIDA JAIMES

## CHILD DEVELOPMENT CLASSROOM

The theme for the child development classroom this month is music. We will discuss nursery rhymes and songs to sing-along too.

We will be taking outdoor field trips that showcase musical performances at Wolftrap. The book that we will be highlighting will be We're Going On a Bear Hunt, this book is a classic sing-along song, where gross motor movement is encouraged as the children enjoy the music.



Eliu - 07/02

Fany - 07/17



KATHIA DONALICIO

## SERVICE COORDINATION

Please join us this summer to enjoy different activities, field trips, and workshops such as the Wolf Trap field trip on July 19 and the Car Seat Safety training on July 17 (Hybrid session with refreshments available).

Remember to continue attending all our ESL sessions and activities, our Center is open to provide regular services throughout the summer.



Johanna H - 07/13

Ramatu S - 07/27





DR. SUSIE MCPHILOMY

## ADULT EDUCATION CLASSROOM

Welcome summer! My amazing students deserved a break after their classes.

I am happy to announce that Level A participants are ready for Level 1 and Level 1 is going to Level 2 on July 1-2! You worked hard and it shows in your efforts and scores. We are happy to announce a new testing system at PGCC and a new edition of Level 2-3-4 books.

Looking forward to our new session with new expectations, materials, and growth! Stay busy and continue to work hard. I am very proud of every one of you!

## FSC IN-HOUSE RESOURCES

Our newest car seats will be offered at a very discounted price!

If you are interested in getting a car seat, please call us at 301-431-6210 or reach out to Jeniffer Hernandez at [jhernandez@childresource.org](mailto:jhernandez@childresource.org)

---

To gain access to information about our other CRC programs or other resources through our organization, Please visit our website.

Para obtener acceso a información sobre nuestros programas u otros recursos sobre nuestra organización, visite nuestro sitio web.

<https://www.childresource.org>

## HIGHLIGHTING: NURTURING PARENTING PROGRAM

THIS PAST JUNE, 13 PARENTS COMPLETED OUR NURTURING PARENTING PROGRAM WITH KATHIA, SERVICE COORDINATOR. **GREAT JOB PARENTS!!** THANK YOU FOR STAYING ENGAGED.

SILDY A.  
SUGLY D.  
ELUVIA V.  
DORCA A.  
ANDREA G.  
JOHANNA H.  
SANDRA V.  
YESSICA M.  
MIRIAM B.  
WILLIANIK D.  
GLENDY R.  
REINA A.  
MERARI G.



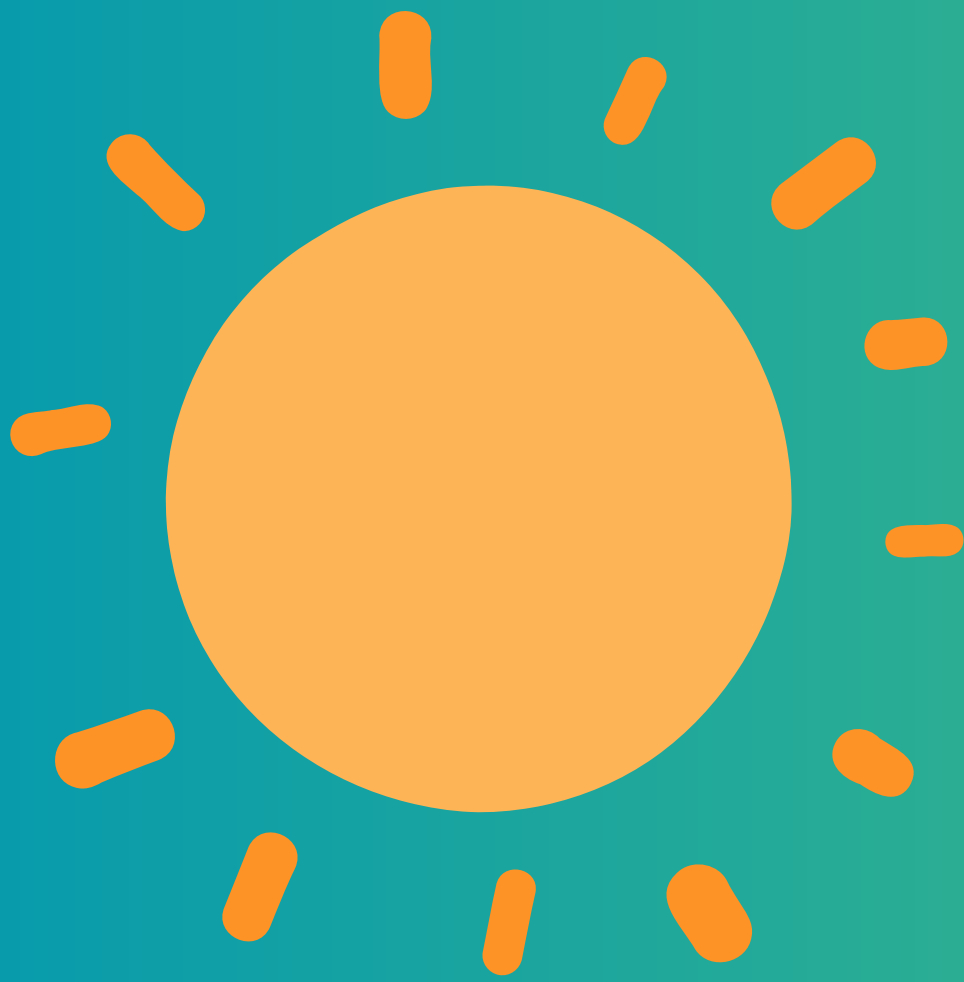
## HELPFUL COMMUNITY RESOURCES

**PRINCE GEORGE'S PARKS & RECREATION - SUMMER PROGRAMS:**  
**[HTTPS://WWW.PGPARKS.COM/629/SUMMER-PROGRAMS](https://www.pgparks.com/629/summer-programs)**

**PRINCE GEORGE'S COUNTY PARKS & RECREATION - SWIMMING LESSONS:**  
**[HTTPS://WWW.PGPARKS.COM/ACTIVITIES-EVENTS/AQUATICS](https://www.pgparks.com/activities-events/aquatics)**

**SUMMER PRINCE GEORGE'S AT THE LIBRARY:**  
**[HTTPS://WWW.PGCMLS.INFO/SUMMER](https://www.pgcmls.info/summer)**

# SUMMER OUTDOOR ACTIVITIES



---

TALK ABOUT WHAT SOUNDS  
DIFFERENT ANIMALS MAKE.  
VISIT A FARM!

HABLA SOBRE LOS SONIDOS  
QUE HACEN LOS DIFERENTES  
ANIMALES. VISITE UNA GRANJA!

---

TAKE A WALK AND LOOK FOR  
BUTTERFLIES. CAN YOU TELL A  
STORY ABOUT WHAT THE  
BUTTERFLIES ARE DOING?

DA UN PASEO Y BUSCA  
MARIPOSAS. ¿PUEDES CONTAR UNA  
HISTORIA SOBRE LO QUE HACEN  
LAS MARIPOSAS?



---

GO OUT AND ENJOY A PICNIC. LOOK  
AT THE SHAPES OF YOUR FOOD. DO  
YOU HAVE ANY SQUARE ITEMS? HOW  
MANY CIRCLE ITEMS?

SAL Y DISFRUTA DE UN PICNIC. MIRA  
LAS FIGURAS DE TU COMIDA. ¿TIENE  
ALGÚNA COMIDA CUADRADA?  
¿CUANTAS COMIDAS REDONDAS?

---



# July

2024

SUN	MON	TUE	WED	THU	FRI	SAT
	1	2	3	4 	5	6
7	8	9	10	11	12	13
14	15	16	17 	18 	19 	20
21	22	23	24	25	26	27
28	29	30				

## FSCPG WEEKLY SCHEDULE

## IMPORTANT DATES:

### MONDAY & WEDNESDAY

8:00 - 11:00 AM  
ESL/ABE CLASS

10:45 - 11:00 PACT

12:00 - 3:00 PM  
ESL/ABE CLASS

### TUESDAY & THURSDAY

8:00 - 11:00 AM  
ESL CLASS-HIGH ESL/ABE

10:45 - 11:00 PACT

12:00 - 3:00 PM  
ESL/ABE CLASS- LEVEL A

### FRIDAYS VIRTUAL- CIRCLE TIME

11:15 - 11:45 (PAUSED DURING SUMMER)

**4TH OF JULY - CENTER CLOSED**  
JULY 4

**CAR SEAT SAFETY SESSION**  
JULY 17

**ADVISORY BOARD- FSC**  
JULY 18

**WOLF TRAP FIELD TRIP**  
JULY 19