

October
2024

THE FSC FLYER

Family Support Center Prince George's
(formerly Adelphi/Langley Park Family Support Center)



WHAT'S INSIDE:

- A Message From Mariela Hakans, Director of Family Support
- FSCPG Updates
- Participant of The Month
- Helpful Resources
- Calendar of Events

Autumn Is Here!

A NOTE FROM MARIELA

Greetings!

Fall is here and winter is not far behind. We are looking forward to all of the fun fall activities we have planned for the rest of the year for our families as well as the educational sessions this month.

We want to thank our visitors from Infants & Toddlers Program as well as from Planned Parenthood who will be sharing important information for our parents. See our calendar for dates!

Mariela



MARIELA HAKANS, DIRECTOR



DESSALINA ROBERTS



BIENVENIDA JAIMES

CHILD DEVELOPMENT CLASSROOM

The theme for this month's Child Development classroom is "Autumn is Here." We will dive into various concepts related to the autumn weather and the seasonal changes.

Our featured book will be The Book of Seasons - El Libro de Estaciones by Alice and Martin Provenson. This book illustrates how the seasons change throughout the year, detailing the effects of our weather. For instance, we will explore topics like the changing colors of leaves and the arrival of colder temperatures.



Elisa L. 10/3
Paulos W. 10/20
Anthony A. 10/21
Hannah U. 10/23



KATHIA DONALICIO

SERVICE COORDINATION

This month, we warmly welcome the arrival of fall!

Join us for an exciting field trip to Montpelier Farms Pumpkin Patch. Please sign up as limited spots available.

Additionally, we are pleased to have Planned Parenthood join us to conduct health education sessions on various engaging topics. The Infants and Toddlers Program will also provide a presentation to inform our families about their services.



Glendy R. 10/10





DR. SUSIE MCPHILOMY

ADULT EDUCATION CLASSROOM

We had a busy and eventful month! Our new participants (Levels 1 and 3) have adapted to the ESL curriculum and blended well with our FSC family showing noticeable progress. The students in levels 1-4 were actively involved in the celebration of Hispanic Heritage month presenting their countries, cultures, and traditional foods at our center.

They have successfully completed the summer session and showed good results in their review tests. We are proud to mention that our star participants Yessica M. and Mirna G., who have studied in our program and are currently working full-time, were featured in the COABE (Professional Development Resource for Adult Education) journal and now are known throughout the country. Yes, "where there is a will, there is a way!"

FSC IN-HOUSE RESOURCES

Our newest car seats will be offered at a very discounted price!

If you are interested in getting a car seat, please call us at 301-431-6210 or reach out to Jeniffer Hernandez at jhernandez@childresource.org

To gain access to information about our other CRC programs or other resources through our organization, Please visit our website.

Para obtener acceso a información sobre nuestros programas u otros recursos sobre nuestra organización, visite nuestro sitio web.

<https://www.childresource.org>

PARTICIPANT OF THE MONTH



CONGRATULATIONS SANDRA!

SANDRA IS RELATIVELY NEW AND STARTED IN OUR PROGRAM FROM LEVEL 1. DUE TO HER DILIGENCE, CONSISTENT ATTENDANCE, AND COMMITMENT, SHE SHOWED GREAT PROGRESS AND MOVED TO LEVEL 2 IN SUMMER, WHERE SHE FEELS COMFORTABLE AND CONTINUES HER STUDIES.

WE STRONGLY FEEL SANDRA HAS A BRIGHT FUTURE AND WILL QUICKLY ADVANCE IN OUR PROGRAM. SHE IS DETERMINED, HARDWORKING, CREATIVE, AND CONSTANTLY STRIVES FOR PERFECTION!

THANK YOU FOR ALL YOUR HARD WORK AND DEDICATION. WE EAGERLY ANTICIPATE THE HEIGHTS YOUR LEADERSHIP WILL TAKE YOU. WE ARE PROUD OF YOU, SANDRA! KEEP UP THE GREAT WORK.

HELPFUL COMMUNITY RESOURCES

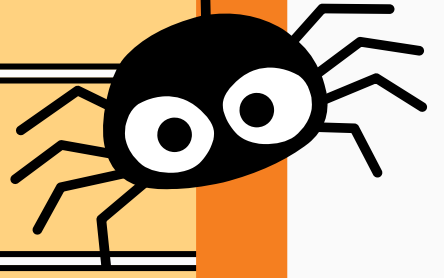
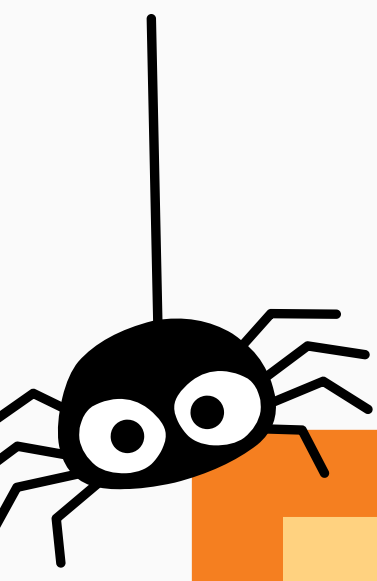
**OCTOBER IS DOMESTIC VIOLENCE AWARENESS MONTH:
NATIONAL HOTLINE # 1800-799-7233 AVAILABLE 24/7**

**MENTAL HEALTH AWARENESS WEEK OCT 1-7
[HTTPS://WWW.NAMI.ORG/GET-INVOLVED/AWARENESS-EVENTS/MENTAL-ILLNESS-AWARENESS-WEEK](https://www.nami.org/get-involved/awareness-events/mental-illness-awareness-week)**

**EARLY LITERACY
[HTTPS://WWW.PGCMLS.INFO/EARLY-LITERACY](https://www.pgcmls.info/early-literacy)**

**FOOD PANTRY LIST:
[HTTPS://WWW.FOODPANTRIES.ORG/CO/MD-PRINCE_GEORGES](https://www.foodpantries.org/co/md-prince-georges)**

OCTOBER 2024



SUN	MON	TUE	WED	THU	FRI	SAT
		1	2	3	4	5
6	7	8	9	10	11	12
13	14	15	16	17	18	19
20	21	22	23	24	25	26
27	28	29	30	31		

FSCPG WEEKLY SCHEDULE

MONDAY & WEDNESDAY

8:00 - 11:00 AM
ESL/ABE CLASS

10:45 - 11:00 PACT

12:00 - 3:00 PM
ESL/ABE CLASS

TUESDAY & THURSDAY

8:00 - 11:00 AM
ESL CLASS-HIGH ESL/ABE

10:45 - 11:00 PACT

12:00 - 3:00 PM
ESL/ABE CLASS- LEVEL A

FRIDAYS VIRTUAL- CIRCLE TIME
11:15 - 11:45

IMPORTANT DATES:

OFFICES OPEN AND CLASSES AS NORMAL
10-7-2024

MONTPELIER FARMS FIELD TRIP
10:00AM - 1:00PM
10-9-2024

CDBG SITE-VISIT-FSC
10-10-2024

INDIGENOUS PEOPLES DAY- CENTER CLOSED
10-14-2024

ADVISORY BOARD MEETING FSC/HF
9:00AM - 10:30AM
10-17-2024

HEALTH EDUCATION - SEXUAL AND REPRODUCTIVE
10:00AM - 11:00AM
10-23-2024

INFANT AND TODDLERS CONVERSATION
10-29-2024